

**INKBERROW
PRIMARY
YEAR 4
TIMES TABLES
CHECK**

PARENTS PRESENTATION



YEAR 4 TIMES TABLE CHECK

- Designed to inform you of what is going to happen regarding the Times Tables Check this year
- Help you understand why we do it
- Guide you in the direction of resources to help your child
- Answer any questions you may have



WHY DO THE CHECK?

- It's a government requirement to make sure all children know all Times Tables up to 12×12
- Up until 2021 schools could choose to participate
- 2022 - is now compulsory.
- It helps with fluency in longer multiplication and division methods in everyday mathematics
- The check was developed by working with 2500 primary schools, extensive research and trials and over 14000 pupils.



Before now, we had no way of measuring how well children were doing before they sat SATS in Y6. This is pre-assessment to put support in place.

Ofsted

Stated that pupils without instant recall of multiplication tables struggle at maths.

Nick Gibb

“It is vital that all children can grasp and master arithmetic while they are still at primary school. If we fail children at this early stage, the risk is they will never catch up. It is important that pupils [...] have learnt the multiplication tables by heart before they leave primary school.”



WHAT IS INVOLVED?

- 25 questions
- All Times Tables, with a focus on 6s, 7s, 8s, 9s and 12s
- No division facts will be tested
- No longer than 5 minutes per child (on average)
- Timer on screen (6 seconds per question)
- Accepts an answer even if you don't click enter



RESULTS

- We will provide you with the results of your child
- From the results, we can identify any children that may need more support in learning them
- We will be able to compare how our school compares with schools across the county and nationally



HOW ARE WE ASSESSING THE CHILDREN?

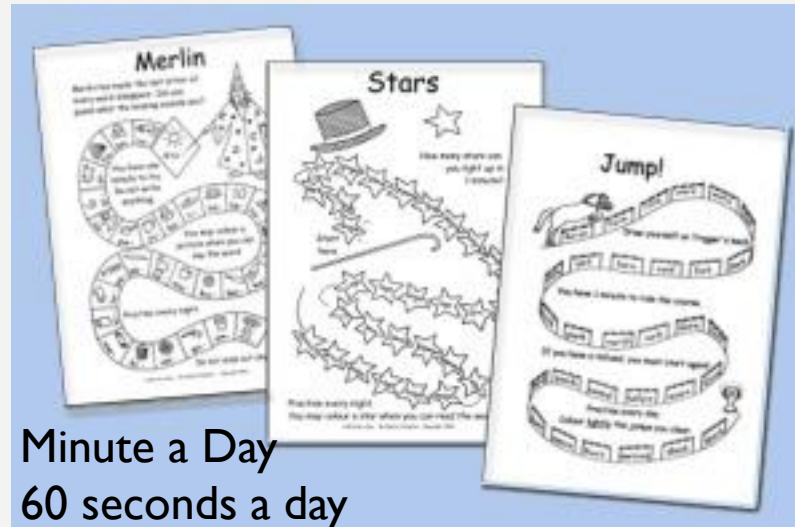
- We undergo Half Termly assessments.
- We test all times tables to ensure retention and progress
- We identify areas of weakness then we input support where needed



HELPING CHILDREN IN SCHOOL



20 minutes per week



Minute a Day
60 seconds a day



Snakes & Ladders
Times Tables

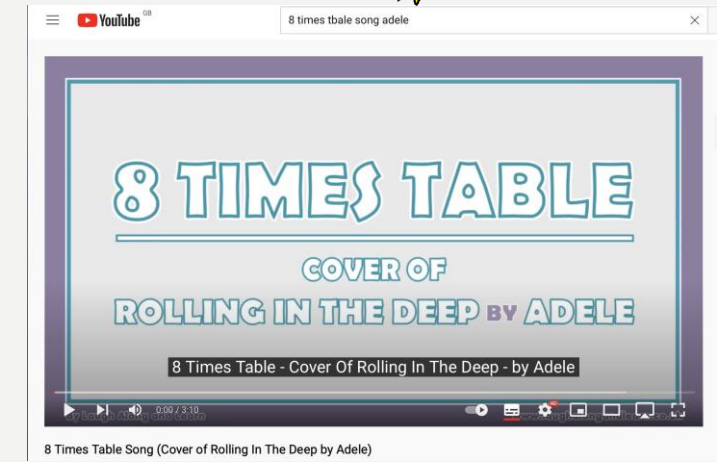
Roll the dice and move forward that number of spaces. Whichever square you land on shout out the answer, if you get it wrong, miss a go. When you land on a square with a ladder climb it BUT should you land on a snake's head you have to go down to the tip of its tail. Winner is the first to the finish.

72 ÷ 12	7 x 8	4 x 11	36 ÷ 6	9 x 9	18 ÷ 2	Go back 3 spaces	2 x 1	6 x 5	121 ÷ 11
12 x 6	5 x 12	144 ÷ 12	Go back 3 spaces	7 x 7	27 ÷ 9	8 x 5	2 x 6	24 ÷ 2	4 x 3
Roll again	36 ÷ 3	11 x 12	72 ÷ 8	0 x 7	12 x 9	132 ÷ 12	4 x 9	Go back 3 spaces	8 x 8
3 x 10	12 x 3	49 ÷ 7	Miss a turn	2 x 8	6 ÷ 2	5 x 5	24 ÷ 4	3 x 1	28 ÷ 7
7 x 9	4 ÷ 2	8 x 3	12 x 7	28 ÷ 4	12 x 12	96 ÷ 12	6 x 7	Roll again	54 ÷ 6
48 ÷ 6	0 x 10	Go back 3 spaces	80 ÷ 10	56 ÷ 7	6 x 6	9 x 8	60 ÷ 12	35 ÷ 7	11 x 10
7 x 3	3 x 6	36 ÷ 4	5 x 11	9 x 6	81 ÷ 9	Miss a turn	8 x 4	2 x 9	18 ÷ 3
9 x 7	Go back 4 spaces	4 x 7	8 x 12	108 ÷ 9	2 x 7	5 x 9	60 ÷ 5	12 x 0	4 x 6
6 x 8	12 x 4	132 ÷ 11	7 x 5	11 x 11	63 ÷ 7	10 x 10	3 x 9	Miss a turn	64 ÷ 8

Inky Owl Board Games – 15 minutes a day

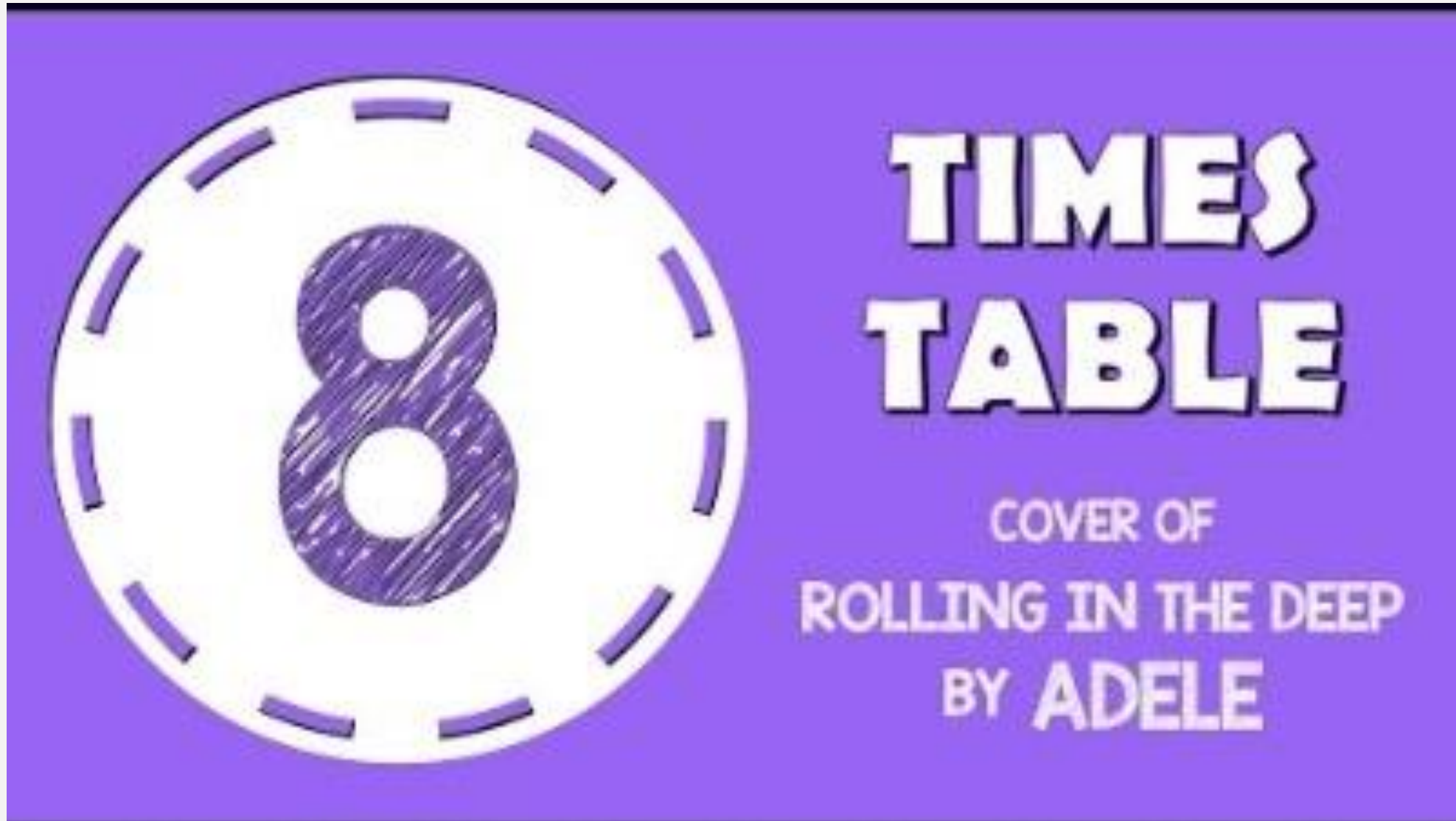


Multiplication
Weekly simulation of Test
Using Purple Mash
10 minutes per week

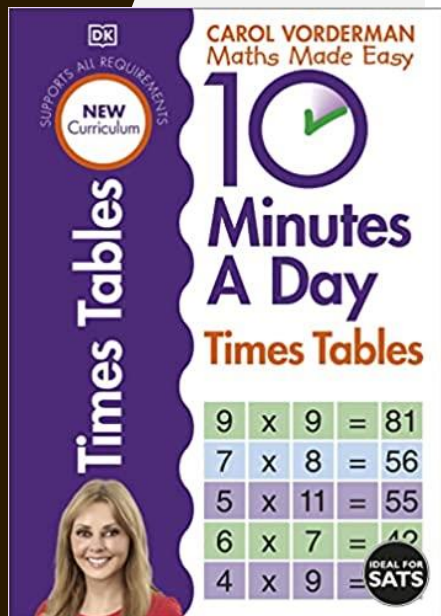


YouTube Song Videos

LAUGH ALONG AND LEARN CHANNEL (YOUTUBE)



HELPING AT HOME



CAROL VORDERMAN
Maths Made Easy

10
Minutes
A Day

Times Tables

9	x	9	=	81
7	x	8	=	56
5	x	11	=	55
6	x	7	=	42
4	x	9	=	36

IDEAL FOR
SATS

- Daily practice using any of the platforms – TT Rockstars/Purple Mash
- YouTube videos - Laugh Along and Learn Channel
 - 6 times table – Shake it off by Taylor Swift
 - 7 times table - Happy by Pharrell Williams
 - 8 times table – Rolling in the deep by Adele
- 9s Finger Trick
- Flash Cards/Board Games
- Books on Times Tables
- Wall charts



HELPING AT HOME

- Rhythmic chanting – '2 3s are 6, 3 3s are 9, 4s are 12'
- Skip counting in multiples: 6, 12, 18, 24, 30
- Additive calculation/repeated addition

What is 6×6 ? Well $5 \times 6 = 30$, so add one more lot of 6 on to make 36!

- Remind them that 5×9 is the same as 9×5 !

Little and often! Everyday!



WHERE DO THE RESULTS GO?

- Results go to individual parents only
- No official pass mark or threshold to meet
- Ideally, the children should get as close to 25 as they can
- The school results will not be published in any way – no leagues or performance data



KEY POINTS

- From the 2021/22 academic year, the MTC is **statutory for all year 4 pupils** and is only being rolled out to schools in England
- It is “**an online, on-screen digital assessment.**” Pupils will either be using a laptop or computer.
- The program will automatically mark each child’s test
- It will last approximately **5 minutes in length**
- The children will be set a handful of practice questions to begin with (mostly from the one times table).



- After this, there will be **25 timed questions** (6 seconds per question with a 3 second gap)
- It will identify pupils who have not yet mastered this mathematical skill so schools can give them additional support
- Check window opens on **Monday 6 June for a 3-week period.**
- We will be choosing when to sit this during the 3 week period.
- Pupils should use the try it out area with the devices they will use, with any access arrangements enabled, to ensure they are familiar with the check.
- **Mainly based on 6 7 8 9 & 12 times tables.**



ANY QUESTIONS?

