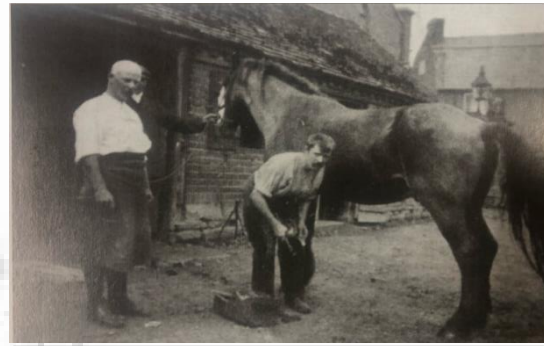


Inkberrow Now and Then



Key Questions

- ❖ What can we learn about how Inkberrow Village has changed over time from looking at maps?
- ❖ What inferences and deductions can we make about life in the past using photographs?
- ❖ What can we learn about Inkberrow's past by exploring historical archives?
- ❖ How has Inkberrow Primary School changed since it was established?
- ❖ What would it have been like to have been a pupil at Inkberrow School in the past?
- ❖ Which buildings best tell the story of Inkberrow then and now?



The Forge Shop, 1913



The Forge Shop, 2006



The Forge Shop, 2019

Key Vocabulary

- ❖ Primary and Secondary sources
- ❖ Village
- ❖ Forge
- ❖ Development
- ❖ Architecture
- ❖ Settlement
- ❖ Landmark
- ❖ Adaptation
- ❖ County
- ❖ Victorian
- ❖ Careers
- ❖ Taxation
- ❖ Land use
- ❖ Boundary

Key Places

- ❖ Inkberrow Village, West Midlands, UK
- ❖ The Hive, Worcester - Records from previous years
- ❖ Inkberrow Primary School, Inkberrow Village, Worcestershire.
- ❖ Church of St Peter, Inkberrow.



Useful Links

- ❖ <https://www.british-history.ac.uk/vch/worcs/vol3/pp418-430>
- ❖ <http://www.inkberrow.org.uk/news.html>
- ❖ <https://web.archive.org/web/2016030404022>
- ❖ http://www.cofe-inkberrow.org.uk/st_peter.shtml

Communication

The records we keep about how the village has changed are all on paper. This is because computers and technology were not commonly used until the early 2000s.

We know how people used to live by reading letters, looking at photographs and talking to people who lived during the time we are studying.

1851

Inkberrow National School opened with 140 pupils

1938

Pupils at Inkberrow School started to wear a uniform. Children aged 5 - 15 attended the school.

Georgian Times
1714 - 1837

Victorian Times
1837 - 1901

World War I
(The Great War)
1914 - 1918

World War 2
1939 - 1945

2024

1820

There were 289 houses in the village and approximately 1335 inhabitants.

1967

The bakery was built. This was run by the Savage Family.

Key Information

Inkberrow Primary School	First known as Inkberrow National School , Inkberrow has had a school since 1851 when boys and girls were educated separately in the hall.
The Forge Shop	The Forge shop used to be a Blacksmith . This is where metal objects are made and usually horse shoes are replaced. Today it operates as a local convenience store.
Development of land	As technology advances, the need for different shops and housing changes and therefore the local council make changes to how we use our land .
The Victorian Era	Between 1837 and 1901 , Queen Victoria ruled the United Kingdom. Therefore, Inkberrow Primary School opened during the Victorian Times .
The Great War	Between 1914 and 1918, the First World War took place. There is a plaque in our school hallway to commemorate the lives of those previous students who lost their lives.
Taxes	In 1799 , it was ordered that all citizens of the UK must pay money to help the government . There are known as taxes. They help fund things like buildings and roads.
Architecture	An architect designs how buildings should look before they are built . In Inkberrow, there is a house with painted windows. This was designed so that the occupants who lived there didn't have to pay window tax at the time.