

Summer 2: Location, Location, Location

How do we know if something is alive?

Can we research British habitats?
Urban, pond, woodland and coastal.


Life Processes

Characteristics of living things

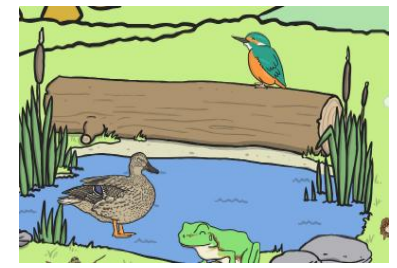
Movement
Respiration
Sensitivity

Growth
Reproduction
Excretion
Nutrition

MRS GREN



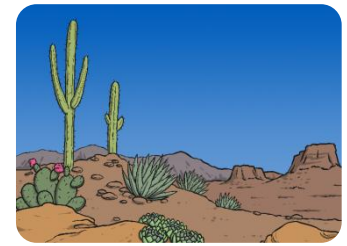
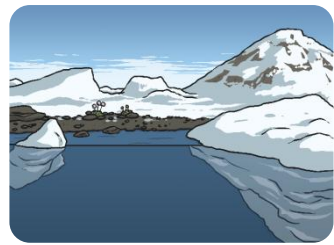
Can we describe how a habitat supports the life processes of the plants and animals that live there?



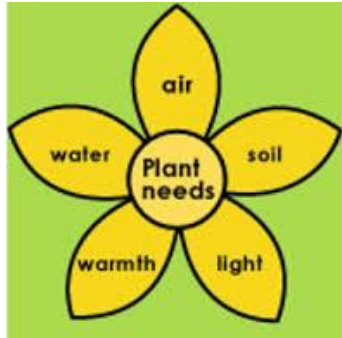
Website links:
Habitats
<https://www.bbc.co.uk/bitesize/topics/zx882hv>
Life processes
<https://www.bbc.co.uk/bitesize/clips/zg7s39g>

Science glossary:
Life processes: There are seven life processes. These are the processes that something does if it is alive.
Habitat: a habitat is the type of natural environment in which an animal, plant or organism lives.
Adaptation: Most things live in habitats to which they are suited and different habitats provide for the basic needs of different kinds of animals and plants.
Dependency: The plants and animals - including humans - in a habitat need each other to survive.

Can we research world habitats?
Tropical rainforest, Arctic, desert and ocean.



Can we observe and describe how seeds grow into mature plants?



Science glossary:

Seed: are the small parts produced by plants from which new plants grow.

Germination: When conditions are right, a seed begins to grow into a young plant or a seedling.

Roots: usually underground, provides the stems and leaves with water and dissolved minerals.

Leaf: the part of the plant that takes in sunlight

Stem: supports leaves, flowers and fruits and transports fluids between the roots and the shoots.

Can we research how and why seaside holidays became popular and how they have changed?

Transport

Then



Now



How did technology change transport and how did the development of transport influence seaside holidays?

Website links:

Plants:

<https://www.bbc.co.uk/bitesize/topics/zpxnyrd>

Life processes:

<https://www.bbc.co.uk/bitesize/topics/z6882hv/articles/zs73r82>

Holiday in 1974

<https://www.bbc.co.uk/programmes/p00itjry>

Holidays

Then



Now



History: Key vocabulary:

Before, after, past, present, then and now.

History: Glossary

Artefact: an object of historical interest.

Chronological order: putting events in time order.

Similarity: things that are the same.

Difference: things that are not the same.

Compare: to look for similarities and differences between things.

Summer 2: Location, Location, Location

Can we develop a wide range of art and design techniques?

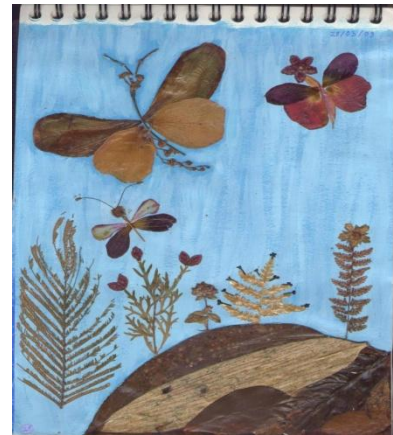
Printing

Using objects to transfer words or patterns onto a different surface.



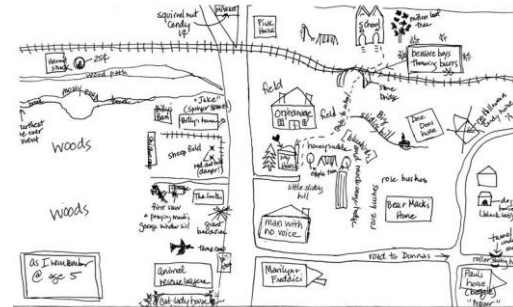
Collage

A piece of art created by combining photos, clippings or small objects onto a surface.



Can we identify geographical features in our locality?

Can we draw maps?



Can we compare the human and physical geography of our locality with a small area of a contrasting non European country?

Can we apply our geographical knowledge to plan, make and label a model island?



Geography glossary:

Physical geographical features: features created by natural processes; mountains, rivers, beach, cliff

Human geographical features: features created by humans; car parks, roads, canals, airports, towns