

Summer 1: The Rainforest

Key Questions

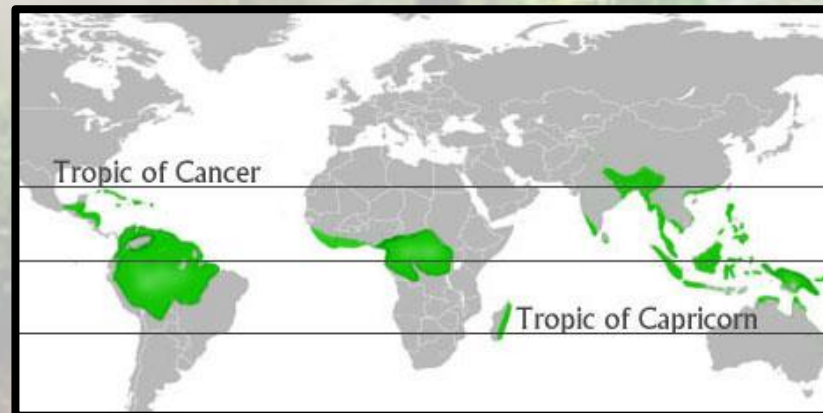
- ❖ What is a rainforest?
- ❖ Where are rainforests found in the world?
- ❖ What layers are there in the vegetation of a rainforest?
- ❖ What is the climate like in a rainforest?
- ❖ Which settlements live in the Amazon Rainforest?
- ❖ Why are rainforests under threat? How can we protect them?
- ❖ Which animals live in the rainforest?
- ❖ What food chains can you identify in the rainforest?

Key Places

- ❖ The Amazon Rainforest, South America
- ❖ Akamba Tropical House, Birmingham
- ❖ The Living Rainforest, Berkshire

Layers of the Rainforest

Rainforests are divided into layers. Each layer receives a different amount of sunlight, and this determines which plants and animals live there.



Key Vocabulary

- ❖ Forests
- ❖ Rainfall
- ❖ Equator
- ❖ Tropic of Capricorn
- ❖ Tropic of Cancer
- ❖ Tropical
- ❖ Continents
- ❖ Humidity
- ❖ Plants
- ❖ Animals
- ❖ Vegetation
- ❖ Emergent Layer
- ❖ Canopy Layer
- ❖ Under Storey
- ❖ Forest Floor
- ❖ Water Cycle
- ❖ Deforestation
- ❖ Tribes
- ❖ Yanomami
- ❖ Mining
- ❖ Endangered
- ❖ Global Warming

Useful Links

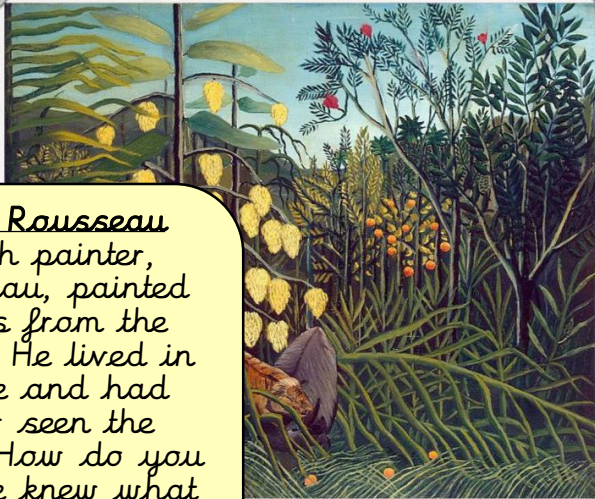
- ❖ <https://www.natgeokids.com/uk/discover/geography/physical-geography/15-cool-things-about-rainforests/>
- ❖ <https://www.theschoolrun.com/homework-help/rainforest-habitats>
- ❖ <https://kids.mongabay.com/>
- ❖ https://www.ducksters.com/science/ecosystems/rainforest_biome.php



Rainforest Alliance

Biome and the World

15% of the world's surface were covered in rainforests. That has now been reduced to just 6%. Humans are chopping trees down and clearing land to make space to live. It is important we try to protect our planet so our children's children can learn all about it too!



Henri Rousseau
French painter, Rousseau, painted scenes from the Jungle. He lived in France and had never seen the jungle. How do you think he knew what a jungle looked like?



Key Information

Rainforest	Rainforests are very hot, dense forests . They are called rainforests because they get a high level of rainfall every year. They have very high temperatures all year round .
Tropic of Cancer and Tropic of Capricorn	The equator is an imaginary line that goes all the way around the earth. It is the section that is closest to the sun, and therefore is the hottest . The tropics are 2 more lines, either side of the equator . Rainforests are usually located between these two lines.
Emergent Layer	This is where the tallest trees grow . They can be as big as sky scrapers (40m - 80m!) They are exposed to a lot of sun and high winds .
The Canopy	This is the layer below the emergent layer. It is made of branches and leaves, all crowded together . 98% of the sunlight is blocked out because of this!
Under Storey	This layer has very little sunlight and is very dark and damp. Small shrubs and trees grow here .
Forest Floor	This is the bottom layer of the forest floor where dead animals and plants rot . They decay very quickly due to insects, fungi and hot temperatures.
	The largest tribe of the Amazon Rainforest . They lived there unknown to the rest of the world until the 1960s. Each family has a 'shabono', a large oval, with a space in middle where the whole family lives.